

## Features

### Individually addressable manual fire alarm stations for releasing applications with:

- Power and data supplied via IDNet addressable communications using a single wire pair
- Operation that complies with ADA requirements
- Visible LED indicator that flashes during communications and is on steady when the station has been activated
- Pull lever that protrudes when alarmed
- Break-rod supplied (use is optional)
- Dual action push and pull operation
- Label kit provides for six varieties of releasing applications (ordered separately)

### Compatible with the following Autocall Releasing System control panels equipped with IDNet communications:

- Model Series 4100ES, 4010ES, 4007ES

### Compact construction:

- Electronics module enclosure minimizes dust infiltration
- Allows mounting in standard electrical boxes
- Screw terminals for wiring connections

### Tamper resistant reset key lock

- Locks are keyed the same as Autocall fire alarm cabinets

### Multiple mounting options:

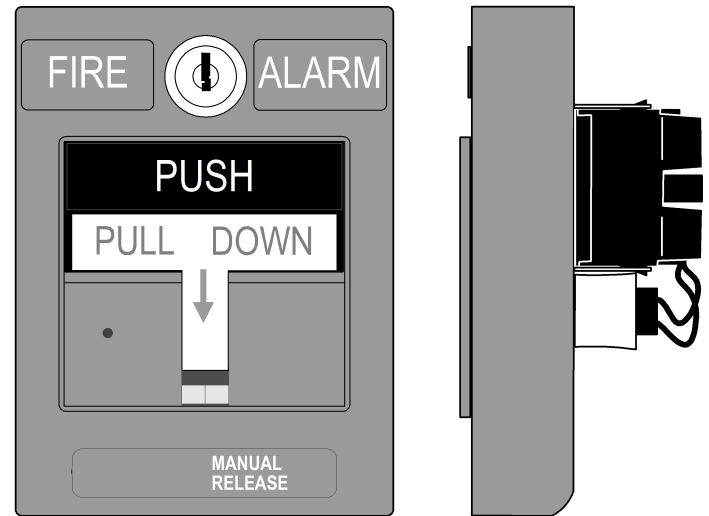
- Surface or semi-flush with standard boxes or matching Autocall boxes
- Flush mount adapter kit
- Adapters are available for retrofitting to commonly available existing boxes

### UL listed to Standard 38

## Description

These A4099 series addressable manual stations combine the familiar Autocall housing with a compact communication module providing easy installation for releasing applications. The integral individual addressable module (IAM) monitors status and communicates changes to the connected control panel via IDNet communications wiring.

A blank area on the front of the station allows the selection of a label to match the specific releasing application (label kit is ordered separately). (Refer to data sheet *AC4099-0005* for standard Autocall addressable manual stations.)



**Figure 1: A4099-9015 Addressable Manual Station for Releasing Applications**

## Operation

Activation requires that a spring loaded interference plate (marked PUSH) be pushed back to access the station pull lever with a firm downward pull that activates the alarm switch. Completing the action breaks an internal plastic break-rod (visible below the pull lever, use is optional). The use of a break-rod can be a deterrent to vandalism without interfering with the minimum pull requirements needed for easy activation. The pull lever latches into the alarm position and remains extended out of the housing to provide a visible indication.

Station reset requires the use of a key to reset the manual station lever and deactivate the alarm switch. (If the break-rod is used, it must be replaced.)

Station testing is performed by physical activation of the pull lever. Electrical testing can be also performed by unlocking the station housing to activate the alarm switch.

## Addressable Manual Station Product Selection

**Table 1: Addressable Manual Stations**

SKU	Description
A4099-9015	Double action, Push operation, Addressable manual station; red housing with white letters and white pull lever; requires label kit A4099-9802
A4099-9802	Label kit, white lettering on red background; select the label required for the specific releasing application; types include: Clean Agent, Extinguishing, Carbon Dioxide, Foam System, Sprinkler, and Manual

**Table 2: Accessories**

SKU	Description	
2975-9178	Surface mount steel box, red	Refer to Figure 2 for dimensions
2975-9022	Cast aluminum surface mount box, red	
2099-9813	Semi-flush trim plate for double gang switch box, red	Typically for retrofit, refer to Figure 4.
2099-9814	Surface trim plate for Wiremold box V5744-2, red	
2099-9819	Flush mount adapter kit, black	Refer to Figure 5 for more information.
2099-9820	Flush mount adapter kit, beige	
2099-9804	Replacement break-rod	

## Specifications

**Table 3: Specifications**

Specification	Rating
Power and Communications	IDNet communications, 1 address per station, up to 2500 ft (762 m) from fire alarm control panel, up to 10,000 ft (3048 m) total wiring distance (including T-Taps)
Address Means	Dipswitch, 8 position
Wire Connections	Screw terminal for in/out wiring, for 18 to 14 awg wire (0.82 mm <sup>2</sup> to 2.08 mm <sup>2</sup> )
UL Listed Temperature Range	32° to 120° F (0° to 49° C) intended for indoor operation
Humidity Range	Up to 93% RH at 100° F (38° F)
Housing Color	Red with white raised lettering
Material	Housing and pull lever are Lexan polycarbonate or equal
Pull Lever Color	White with red raised lettering
Housing Dimensions	5" H x 3 3/4" W x 1" D (127 mm x 95 mm x 25 mm)
Installation Instructions	579-1135AC

## Addressable Manual Station Semi-Flush Mounting

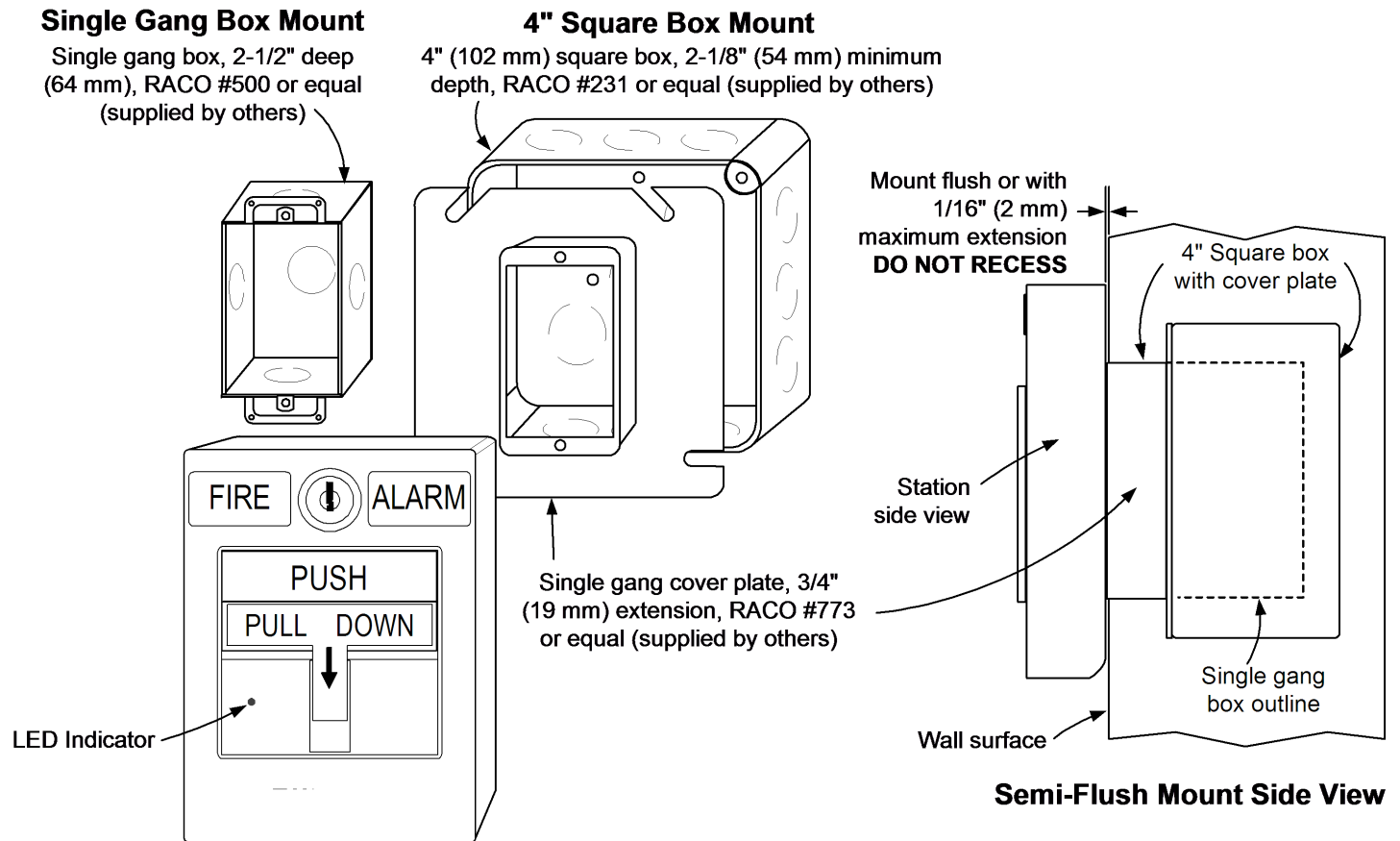
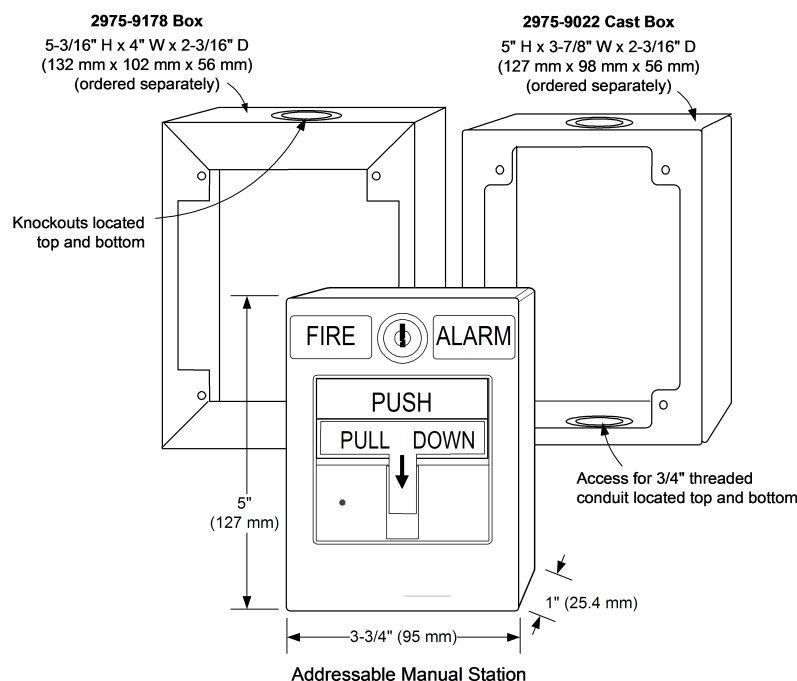


Figure 2: Addressable Manual Station Semi-Flush Mounting

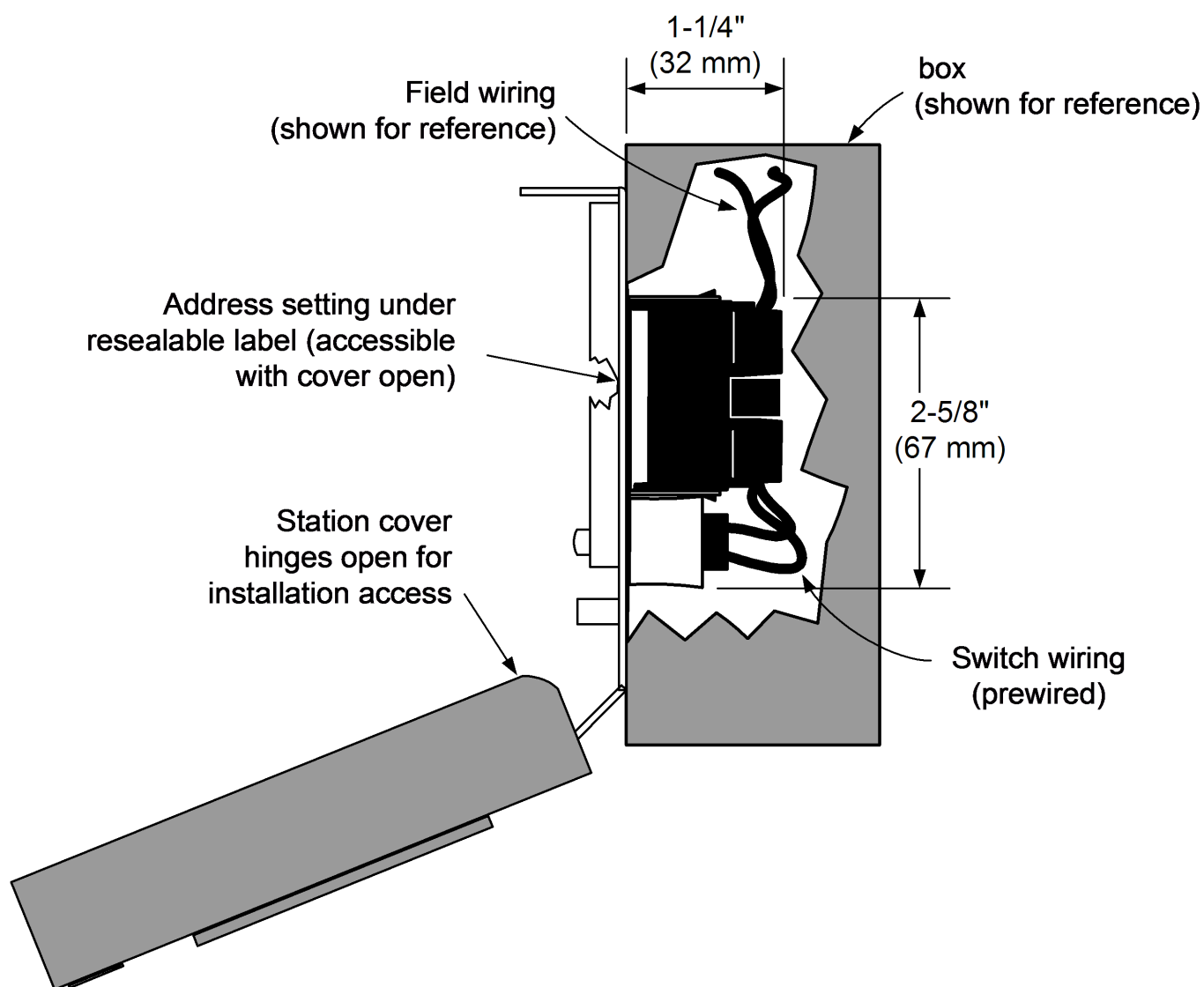
## Addressable Manual Stations Surface Mounting



**Figure 3: A4099-9015 Addressable Manual Stations Surface Mounting**

Preferred Mounting. For surface mounting of these addressable manual stations, the preferred electrical boxes are shown in the illustration to the right. Refer to Figure 4 for Wiremold box mounting compatibility.

# Surface Mount Side View with Internal Detail



## Addressable Manual Station, Additional Mounting Information

For retrofit and new installations, additional compatible mounting boxes and the required adapter plates are shown in Figure 4.

**Note:** Figure 4 shows 2099-9814 Surface trim for Wiremold box and 2099-9813 Semi-flush trim for 2-gang switch box.

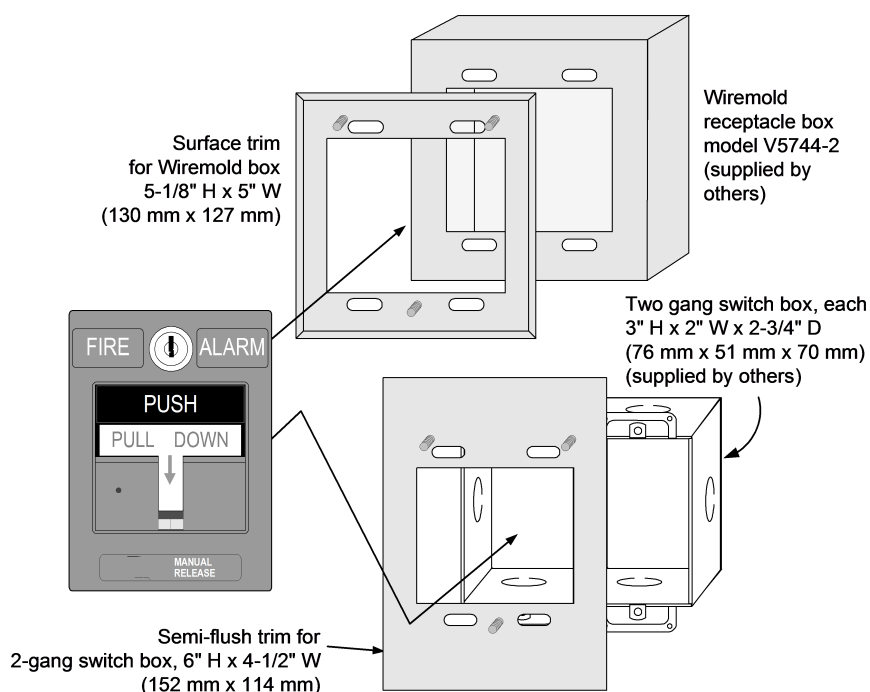


Figure 4: Retrofit Mounting Information

## Addressable Manual Station, Flush Mounting Information

Flush mount adapter kit as shown in Figure 5 is available in black (2099-9819), and beige (2099-9820).

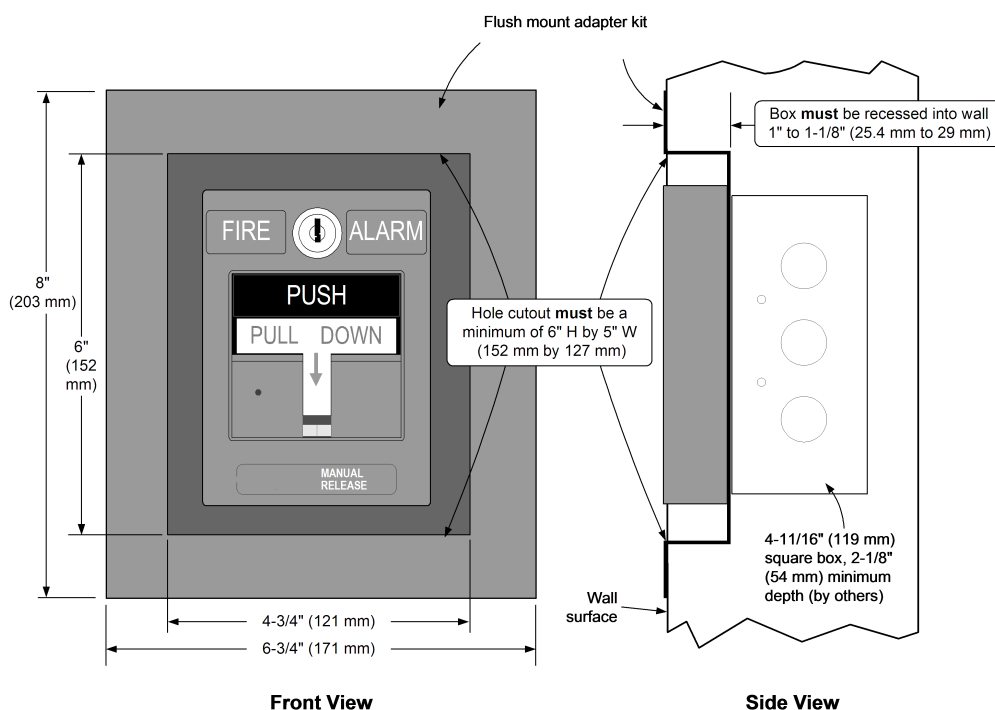


Figure 5: Flush Mounting Information