

## Features

### TrueSite Graphic Annunciator general features:

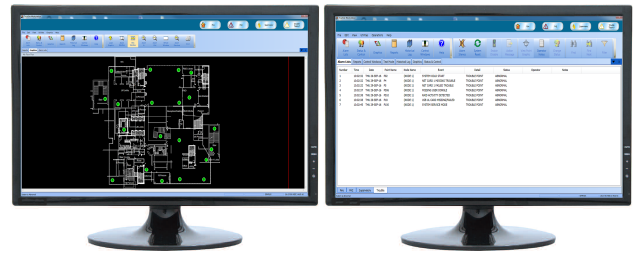
- **Autocall fire alarm network connected** graphical interface
- **Supports standard fire service annunciation icons** to provide firefighter and first responders with critical fire response information
- **Custom alarm and system messages** can intuitively guide emergency responders; important information (HAZMAT locations, contact information, etc.) can be quickly presented
- **Color graphical annunciation** capacity for up to 100,000 points
- **Floatable and dockable windows** allows windows to either be fixed (docked) or floatable
- **Password Security** supports 8 to 16 alphanumeric passwords with configurable lockout for quantity of failed attempts
- **Quad monitor support** allows multiple active windows such as putting the Alarm List Window on one monitor and the Graphics Window on another, with up to 4 total supported monitors
- **Pan-and-zoom features** allow precise dynamic navigation within a graphic screen for rapid and convenient selection of the area of interest
- **Configurable coverage zones** allow user defined areas or zones within a graphics screen to be highlighted to indicate the area of activity without zooming into the point of interest
- **Auto-jump** allows the screen view to automatically jump to a graphic at a predetermined zoom level with the active device centered on the screen; alternately, the system can be selected to auto-jump to the Alarm List window
- **Captive or Non-Captive modes** support dedicated annunciator operation (captive) or annunciator operation with other Windows applications (word processing, spreadsheet, etc.) where annunciator activity takes precedence (non-captive)
- **Extensive historical logging**; up to 500,000 events; information is compatible with spreadsheet and database programs for report customization
- **Multiple password** controlled operator levels with selectable feature access
- **Available optional connections** for printers or other compatible systems
- **Operating Systems**; Compatible with Windows 7 & 10 Professional or Enterprise

### Agency Listings

UL 864 and ULC-S527 as Control Unit Annunciator

### Additional annunciator system features:

- **TrueSite Workstation Mobile Client** allows compatible iOS and Android devices to access system information
- **Export to XML** allows TrueSite Workstation data to be easily exported for report generation and customization
- **Node Name** supports including a description of the specific building or area associated with a point in the annunciator views and reports
- **Web Browser Command Link** enables the ability to easily call up an external web page or link (web-cam, etc.) with a single command button on a graphic screen
- **RAID 1 Support** provides a real-time "mirror" image on a secondary hard drive. Operation will automatically transition to the alternate drive on a drive failure without loss of operation. RAID support is available to systems that do not use the Backup Utility.



**Figure 1: TrueSite Graphic Annunciator (optional second monitor with expanded desktop shown)**

- **Backup Utility** can be configured to automatically backup specified directories, including TSW job data, to the secondary hard drive. The Backup utility is available to systems that do not use RAID.
- **Sound files** (WAV) can be used to create custom audible status annunciation using local onboard speakers
- **Fahrenheit or Celsius** temperatures can be displayed for screens showing heat sensor temperatures

### Graphic screens details:

- Over 30,000 custom field generated and edited graphic screen capacity is available
- Multiple import and export formats are supported (refer to [Graphics Screens](#) for details)

### Additional Fire Alarm Network capabilities:

- Multiple annunciators can be nodes on the same fire alarm network to provide redundant operations for improved survivability
- Connect to up to seven (7) separate network loops
- Graphical diagnostic tools identify network node and loop status
- Provides event printing (with compatible printer), view or print of status and service report information, and print graphic screens (see Table 13 for printing details)
- Compatible with IMS (Information Management Systems) and GCC (Graphic Command Center) on the same fire alarm network
- 2120 Multiplex Serial Line Interface (SLI) allows connection to up to eight, 2120 Multiplex systems

### Selectable computer and monitor options:

- Computers are available as desktop or rack mount with mouse operation and/or touchscreen operation providing convenient user interface
- Desktop LCD widescreen, high resolution LED backlit monitors are 22 inch class, 21.5 inch (546 mm) diagonal, provide 1920 x 1080 resolution, and are available with or without touchscreen
- Wall mount LCD widescreen, high resolution monitors are 42 inch (1067 mm) diagonal, provide 1920 x 1200 resolution, and are available with or without touchscreen
- Rack mount LCD high resolution monitors are 19 inch (483 mm) diagonal with touchscreen and provide 1280 x 1024 resolution

## Description

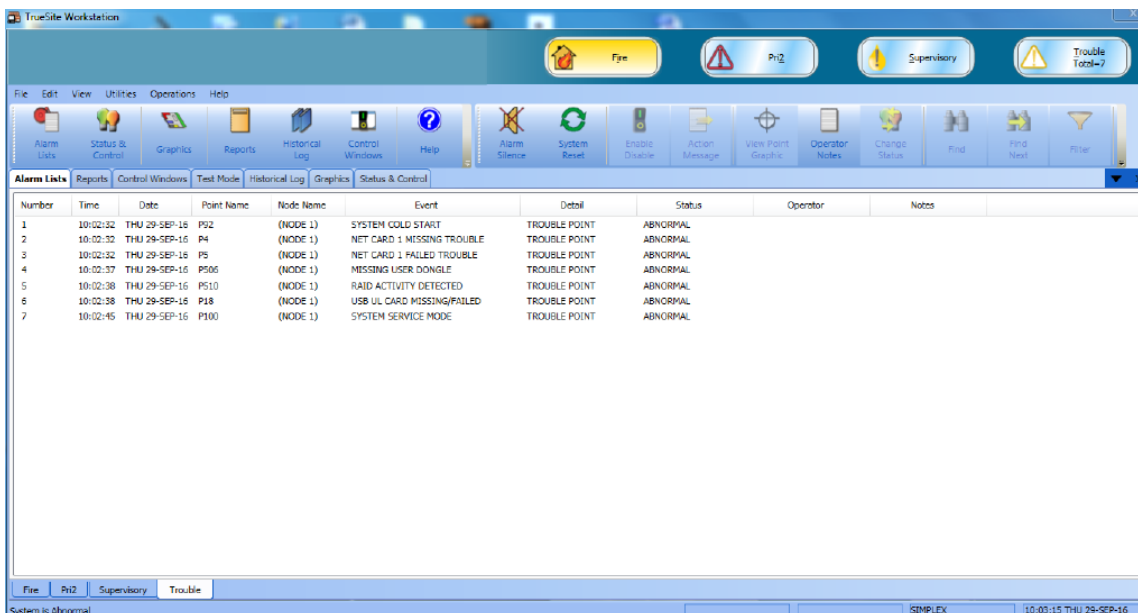
### Network Annunciation.

TrueSite Graphic Annunciators provide annunciation and status display for Autocall Fire Alarm Networks using a personal computer based graphical interface with a high resolution, color display.

## Operation

**Operation.** When fire alarm network status changes occur, the screen displays the type and location of the alarm (or other activity) and the appropriate header buttons appear. In the historical log screen below in Figure 2, Fire, Priority 2, Supervisory, and Trouble buttons are shown with an active Trouble indicated.

**Sample Screens.** Figure 2 is representative of historical log screen detail. Figure 7 is representative of a system graphic screen with icons representing the devices of interest. Screen choices can be configured per system preference. However, when using multiple optional monitors, multiple windows can be visible simultaneously for operator convenience.



Number	Time	Date	Point Name	Node Name	Event	Detail	Status	Operator	Notes
1	10:02:32	THU 29-SEP-16	P92	(NODE 1)	SYSTEM COLD START	TROUBLE POINT	ABNORMAL		
2	10:02:32	THU 29-SEP-16	P4	(NODE 1)	NET CARD 1 MISSING TROUBLE	TROUBLE POINT	ABNORMAL		
3	10:02:32	THU 29-SEP-16	P5	(NODE 1)	NET CARD 1 FAILED TROUBLE	TROUBLE POINT	ABNORMAL		
4	10:02:37	THU 29-SEP-16	P506	(NODE 1)	MISSING USER DONGLE	TROUBLE POINT	ABNORMAL		
5	10:02:38	THU 29-SEP-16	P510	(NODE 1)	RAID ACTIVITY DETECTED	TROUBLE POINT	ABNORMAL		
6	10:02:38	THU 29-SEP-16	P18	(NODE 1)	USB UL CARD MISSING/FAILED	TROUBLE POINT	ABNORMAL		
7	10:02:45	THU 29-SEP-16	P100	(NODE 1)	SYSTEM SERVICE MODE	TROUBLE POINT	ABNORMAL		

**Figure 2: TrueSite Workstation Sample Alarm Lists Screen**

**Ease of Operation.** With touchscreen monitors, the operator touches the screen area in alarm (or uses the mouse control) to access a more detailed view of the alarmed zone or device. With the proper password access, the operator has the ability to acknowledge alarm and trouble conditions, activate signal silence, and perform system reset directly from the workstation screens.

**Programmable Activity Timeout** allows an unattended monitor to revert to the login screen when the configured time period expires.

**Individual User Preferences** appear when the user logs in. Options include: Font Size (default or large); Toolbar Size (small or large); Interface Theme (MS Office 2003 or System); Floating Window Options (select whether to show Menu bar or show Tool bar).

**Historical Log and List Details.** Figure 2 below shows historical log details. The display format is similar to the display for active list items such as the alarm list. Displayed information can be sorted on-screen by each category shown (number, time, date, point name, etc.). List information can be reviewed on the screen or printed at a local or remote system printer.

**Customized Response.** Custom alarm and trouble messages can be added and field edited to provide operator response assistance. Point specific information, such as hazardous material storage and lists of people to notify, can be automatically or selectively displayed.

## Product Image Reference

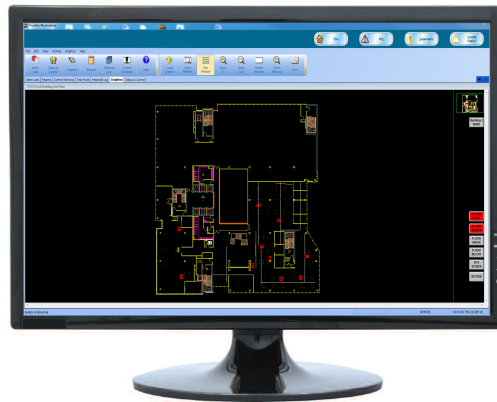


Figure 3: 21.5" Desktop Monitor

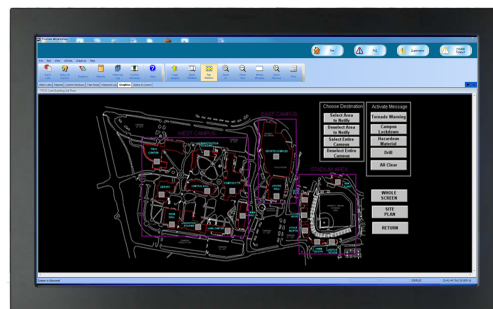


Figure 4: 42" Monitor



Figure 5: Desktop Monitor



Figure 6: Rackmount

## Password Control

**Multiple Access Levels.** Operator access level is determined during log-in. Select functional access to match the training and responsibility of the operator. Operators with additional TrueSite Graphic Annunciator and fire alarm network training may be qualified for access to more detail. For operators who are primarily concerned with immediate facility security, a lower level access will provide the information necessary for proper response but will not allow access to areas beyond their training.

## Graphics Screens

**Site and Floor Plan Details.** Graphics screens can provide easily recognizable site plan and floor plan information. The level of detail can be customized for the specific facility to easily and accurately direct the operator to the immediate area of interest.

**Graphic Screen Controls.** The graphic portion of the screen below is shown as a main screen but could be set to float and be moved to another monitor if desired. Icons can be added to identify the location and type of the device of interest and the graphics control toolbar (located at the top of the graphic) can be used to pan and zoom for more precise detail. Programmable coverage zones can be added with selectable area and zoom level. A fixed area site plan (key plan) with action buttons and screen locator can be added as shown below. Pan and zoom are tracked by a green rectangle in the key plan.

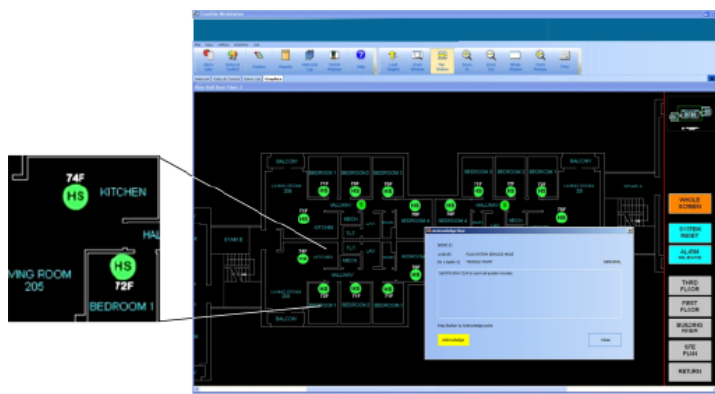
**Custom Banner and Main Screen Background.** The banner area shown with a Autocall logo in Figure 1 can be customized (bitmap area is 2250 x 68 pixels). The main screen background (viewable prior to login) can be customized with a bitmap of up to 1000 x 525 pixels.

**Action Messages.** In addition to screen text or graphic information, the operator can be presented with specific action messages that provide emergency response information and directions. These action messages are easily field edited for local requirements. The appropriate action message in the screen below would be found in the Acknowledge dialog box.

**Auto-Jump to Graphics or Alarm List.** Select whether activity should cause a jump to a list format or to the associated graphic screen.

### Supported Graphics Formats:

- DXF Import Formats: AutoCAD R14 and 2000
- Export Formats: AutoCAD 2000 DWG/DXF format (allows editing in AutoCAD 2000 or later)
- Import drawing files: DWG, WGS, IMS/GCC DOC files, WMF, BMP, GIF, and JPG



**Figure 7: Typical Interface of Multiple Network Loops Using a TrueSite Graphic Annunciator**

## Network Diagnostics

**Graphical Network Status Views.** Automatic, built-in diagnostics are available to provide graphical views of Network topology and Network status. Missing communications links due to wiring breaks or shorts as well as inactive network nodes are indicated clearly to guide in returning the system to normal. Information screens are available to provide detail about each specific network node. Network level functions such as timekeeper node and monitor node are indicated as well as identification of the node being used for the diagnostic.

## Multiple Network Connections

When extensive network expansion or interconnection of existing, separate networks is required, up to seven (7) network loops may be connected to the TrueSite Graphic Annunciator. Each network loop is connected to its own network interface module allowing the annunciator to appear as a node in each individual loop.

With a multi-loop network connection, the TrueSite Graphic Annunciator is a node member of each network loop with up to 98 additional nodes per loop. This allows up to 686 total nodes and the TrueSite Graphic Annunciator (687 total) to be interconnected.



## Multi-Loop Operation Features

### Improved survivability:

- Individual network loops operate independently
- In the event of loss of one or more loops, remaining loops continue to operate

### Loop Independence:

- Loops can operate at different data rates to satisfy individual conditions (9600 or 57,600 bps, selectable per loop)
- New loops can be added without impacting existing loops

### Assists with phased-in system expansion:

- Each loop can be installed as a stand-alone network allowing local node programming to evolve as required
- When construction or renovation reaches completion, loops can be combined for coordinated facility protection

### TrueSite Graphic Annunciator hardware requirements:

- Each loop requires a dedicated Network Interface Card with two media modules
- A maximum of 7 Network Interface Cards are allowed per annunciator

## Version Compatibility

Compatibility with TrueSite Graphic Annunciator requires the 4100ES, 4010ES, or other panels per the following software versions.

Fire Alarm Network Interface and 2120 (SLI) Interface	
A190 GCC/IMS/NPU	Master Version 2.07 (or later)
4100U	Master Version 11.03 (or later)
4100	Master Version 9.02 (or later)
4020	Master Version 9.02 (or later)
4010	Master Version 3.01 (or later)
4002	Network Firmware Version 3.02.92 (or later)
2120	Master Version 5.44 (or later) Network Interface Version 3.02 (or later)
TGA 100,000 point capacity applies to ES series panels or DACR points only. Other legacy 4000 series panels are limited to a capacity of 62,500 points on the TGA (can be mixed with ES series panels reporting above the 62,500 point range). A TGA with a 2120 SLI interface is limited to 62,500 points for the entire system (including ES series panels and DACR points). TSW 100,000 point capacity requires TGA Version 3.04 (or higher) and ES Panels at Version 3.03.04 (or higher).	

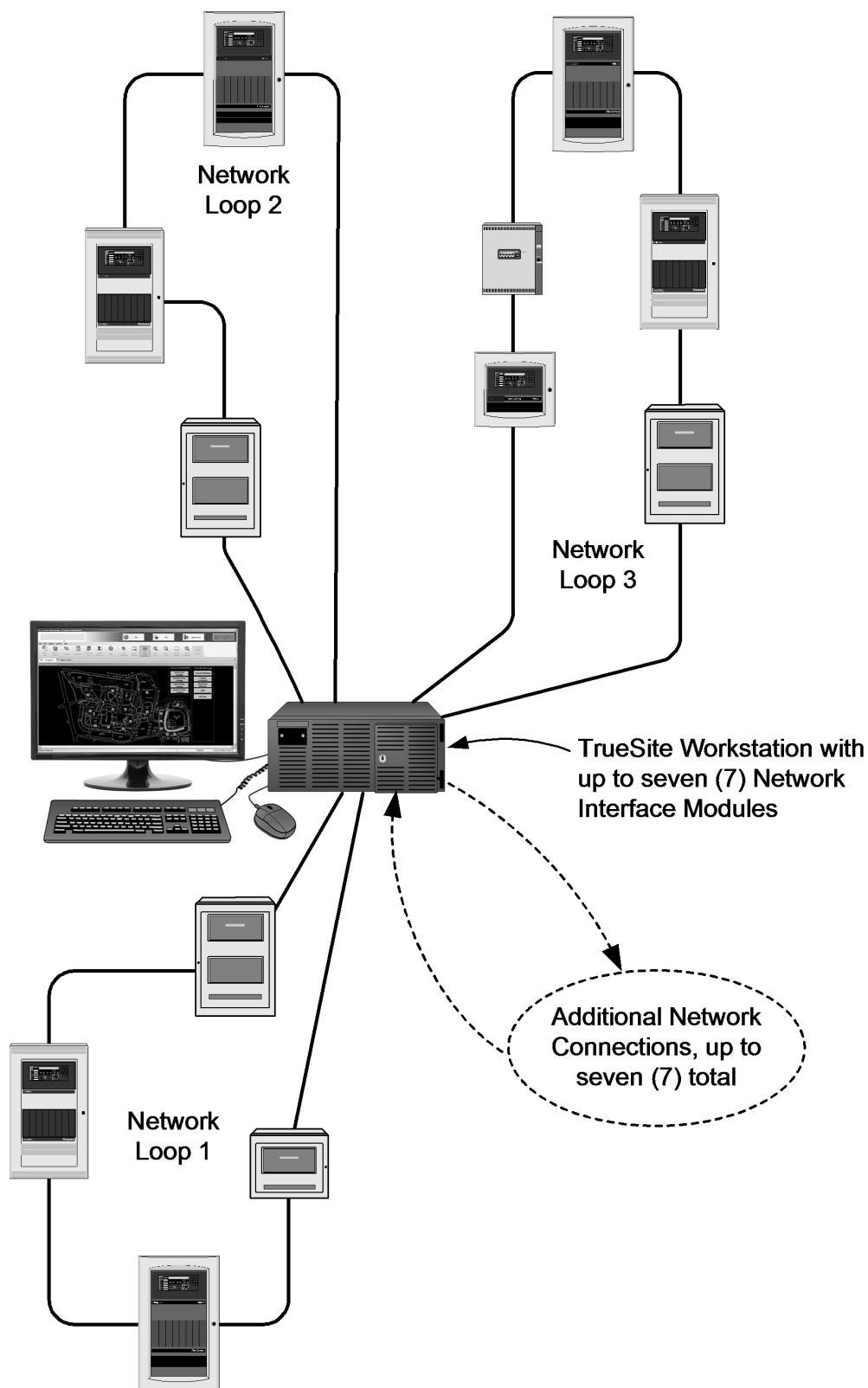


Figure 8: Typical Interface of Multiple Network Loops Using a TrueSite Graphic Annunciator

## Product Selection

**Table 1: Software Only and Aftermarket Additions**

Model	Description
A190-8606	TrueSite Graphic Annunciator Software Only package, refer to Table 12 for computer specifications reference (listings and approvals are not applicable); [NOTE: Windows <b>operating system is not provided</b> . For software only packages purchase operating system locally as required.]
A190-8901	Aftermarket hardware addition
A190-8605	Aftermarket software addition

**Table 2: Computer Type (select one as required)**

Model	Description
A190-7026 A190-7028	Desktop
A190-7027 A190-7029	Rackmount
A190-7030	Desktop

Computer with Intel i7, 2.10 GHz CPU, 6MB Cache, 4GB RAM, (2) 1TB Hard Drives (minimum), USB ULIO card, DVD R/W, integral audio and amplified speakers, onboard video for up to two displays (1) SVGA and (1) DVI, (2) RS-232 Serial ports, (7) USB ports, (2) Gigabit LAN ports, Passive backplane with (8) PCI, (3) PCIe x 1 and (1) PCIe x 16 slot, USB keyboard and mouse; charcoal grey housing; Computers are pre-installed with Windows 10 Enterprise 64 bit (includes CD and license) and TrueSite Workstation software (dongle not included). A190-7026 and A190-7027 are configured with a file Backup utility and no RAID controller, A190-7028 and A190-7029 are configured with RAID 1 data mirroring and no file Backup utility. A190-7027 and A190-7029 include rackmount mounting hardware.

Order with A190-8901 only. Same PC as A190-7026 and A190-7028 except without operating system or TSW software. Use for replacement of existing PCs when operating system and TSW software are available and will be installed on site. Compatible with 32 or 64 bit Windows 10 and Windows 7 operating systems.

**Table 3: LCD Color Monitor**

	SKU	Size (Diagonal)	Description	
Monitor Only	A190-7131	21.5" (546 mm)	LCD Monitor for desktop applications	Select one minimum, four maximum, as required per computer choice; connect as SVGA or DVI, both cables are included; touchscreen models include separate serial controller cable; black/charcoal grey housings
	A190-7114	42" (1049 mm)	LCD Monitor for horizontal wall mount applications	
Monitor with Touchscreen	A190-7233	21.5" (546 mm)	Desktop	LCD Monitor with touchscreen and built-in serial controller
	A190-7234	18.5" (470 mm)	Rack Mount	
	A190-7214	42" (1049 mm)	Wall Mount	

**Table 4: Applications Software (select one per application)**

SKU	Description
A190-5067	<b>TrueSite Workstation Mobile Client Feature;</b> quantity of (1) enables TrueSite Graphic Annunciator information to be accessed from compatible mobile devices; access for mobile clients is enabled by entering an authorized feature code at the server; see data sheet AC4190-0024 for more information

**Table 5: Software Feature Option**

SKU	Description
A190-5067	TrueSite Workstation Mobile Client Feature; quantity of (1) enables TrueSite Graphic Annunciator information to be accessed from compatible mobile devices; access for mobile clients is enabled by entering an authorized feature code at the server; see data sheet AC4190-0024 for more information

**Table 6: Internal Hardware Options (select as required)**

A190-6034	Quad RS-232 Serial Port Card, select when more than two serial ports are required; may be needed for 2120 SLI connections; <b>PCI Slot card</b> with pluggable terminal block output; up to 2 maximum; one A190-6026 suppressor is require per connection (see below)

**Table 7: Transient Suppressed Connectors (select as required)**

Specification	Rating
A190-6002	Transient Protected Connector, <b>select one per connection to a standard RS-232 serial port</b>
A190-6026	Transient Protected Connector for Quad Serial Port Card; one required per connection

**Table 7: Transient Suppressed Connectors (select as required)**

Specification	Rating
A190-6010	Transient Suppressor for LAN/WAN connection; <b>required for agency listing for each TrueSite Graphic Annunciator LAN/WAN connection</b>

**Table 8: Network Interface Modules (seven (7) maximum)**

Configured	Aftermarket	Description
A190-6061	A190-9829	Modular Network Interface (select Media Modules separately, listed below); PCI Slot card

**Table 9: Media Modules for Modular Network Interface (as required)**

Configured	Aftermarket	Description
A190-6036	A190-9822	Wired network media card
A190-6301	A190-9851	Left port, single-mode 4120 duplex fiber media card
A190-6302	A190-9852	Right port, single-mode 4120 duplex fiber media card
A190-6302	A190-9853	Left port, multi-mode 4120 duplex fiber media card
A190-6304	A190-9854	Left port, multi-mode 4120 duplex fiber media card

Mounts on A190-6061 or A190-9829 modular network interface card. Maximum of 1 left port and 1 right port duplex fiber media card per modular network interface card. Field connections require left port to right port pairing. Order fiber media service kits for retrofit jobs where ST connectors are already installed (refer to data sheet **AC4100-0056** for full fiber media module specifications and retrofit information)

**Note:** Please note that equipment and specifications may vary due to equipment design changes.

## TrueSite Graphic Annunciator Equipment Specifications

**Table 10: Computers and Accessories (Please note that equipment and specifications may vary due to equipment design changes)**

SKU	Description	Dimensions	AC Power Input*
A190-7026	Desktop Computer	16 7/8" W x 7" H x 17 5/8" D (429 mm x 178 mm x 448 mm)	2 A @ 120 VAC, 60 Hz (240 W)  Operating Range: 95-132 VAC; 180-264 VAC, auto-range; 50/60 Hz
A190-7028			
A190-7030			
A190-7027	Rack Mount Computer	19" W x 7" H x 17 5/8" D (483 mm x 178 mm x 448 mm)	
A190-7029			
NA	Rack Mount Keyboard Tray (included with computer)	19" W x 1 3/4" H x 12 3/4" D (483 mm x 44 mm x 324 mm)	NA

**Table 11: LCD Monitors (Please note that equipment and specifications may vary due to equipment design changes)**

SKU	Description	Dimensions	AC Power Input*
A190-7131	21.5" Desktop	20 3/16" W x 15" H x 6 3/4" D (513 mm x 381 mm x 171 mm)	0.4 A @ 120 VAC, 60 Hz (48 W)
A190-7233	21.5" Desktop with Touchscreen	20 3/16" W x 15" H x 8 11/16" D (513 mm x 381 mm x 221 mm)	Operating Range: 100-240 VAC, 50/60 Hz
A190-7234	18.5" Rack Mount with Touchscreen	17 3/4" W x 11 1/16" H x 2.022" D (451 mm x 281 mm x 51.4 mm)	1.5 A @ 120 VAC, 60 Hz  Operating Range: 100-240 VAC, 50/60 Hz
A190-7114	42" Horizontal Wall Mount	41 5/16" W x 25 1/4" H x 5" D (1049 mm x 641 mm x 127 mm)	2.02 A @ 120 VAC, 60 Hz (243 W)
A190-7214	42" Horizontal Wall Mount with Touchscreen		Operating Range: 100-240 VAC, 50/60 Hz

\* **Note: Products are Agency listed for 120 VAC.** Computers and monitors are shipped with 120 VAC cord; NEMA 5-15P plug to IEC-320 C-13 connector. For use with other voltages, locally obtain a cord in compliance with local safety standards.

**Table 12: Computer Minimum Specifications Reference\*\***

Specification	Rating
Enclosure**	Passive backplane with: 7 PCI slots and 1 CPU slot; security features: key lock reset switch; fan monitor card; locked door protecting access to the CD/DVD R/W drives and one front mounted USB port
Computer**	Compatible with Microsoft Windows 10 and Windows 7 32 and 64 bit operating systems (see page 1 for specific operating system compatibility); Intel i7 2.1 GHz CPU, or Core 2 Duo 2.1 GHz CPU, 4 GB RAM, 160 GB minimum hard drive; 2 Serial ports, 1 Parallel port, 4 USB ports, dual Gigabit LAN ports, USB keyboard and mouse; SVGA video output with 16 MB VRAM, CD/DVD Drive, PCI and ISA slots (as required), integral audio and amplified speakers, additional ports as required for custom features (e.g. USB, Serial, Parallel, etc.)
<b>** PLEASE NOTE:</b> Autocall A190 Series computers are Agency listed for use with TrueSite Graphic Annunciator software. For applications where Agency listings are not required, TrueSite Graphic Annunciator software should be compatible with most computers meeting the stated minimum specifications. However, due to computer manufacturers potentially using unique and/or proprietary drivers, hardware, or other software not tested with TrueSite Graphic Annunciator software, there may be incompatibilities. If other computers are used, proper operation with TrueSite Graphic Annunciator software may require technical adjustments by a qualified computer technician and would be the sole responsibility of the computer supplier and computer manufacturer.	

**Table 13: Computer Port Reference (A190-7026, A190-7027, A190-7028, A190-7029 and A190-7030)**

Specification	Rating
RS-232 Serial Ports	Two standard, up to 9 total with optional A190-6034 Quad Serial Port Card
USB Serial Ports	7 total; 5 in the rear (one is used for Server Security Dongle), and 2 in the front behind the locked door
Ethernet Ports	Two Ethernet 7029ports and one Parallel port
Event Printing*	For agency listed Proprietary Supervising Station operation and for other operations, if an event printer is desired, a supervised and dedicated Autocall Model A190-9013 agency listed dot matrix printer is recommended; connection is to USB or Serial RS-232 Port of the Server PC (see data sheet <b>AC4190-0011</b> for printer details)
Other Printing*	For report, screen, or graphics printing, a Windows compatible printer can be used. Connection can be USB, Serial RS-232, or LAN/WAN connection via Ethernet
Printable Information	Event printing (with supervised and dedicated dot matrix printer A190-9013 as explained above)
	Auto-print of auto-jump graphics; prints to Windows default printer
	Reports: Historical logs, System Activity, TrueAlarm Status, TrueAlarm Service, Analog Monitor ZAM Calibration, and Active List; displayed reports can print to a LAN connected (unsupervised) printer
	Screen captures (configurable as negative images to reverse black backgrounds)

**Table 14: Environmental Specifications**

Specification	Rating
Operating Temperature	32 °F to 120 °F (0 °C to 49 °C)
Operating Humidity	up to 93% RH, non-condensing, at 90 °F (32 °C)
* Note: Parallel port printer connection is supported on 32-bit operating systems only.	

## Anti-Virus Software

When the TrueSite Graphic Annunciator is connected to a TCP/IP network other than a dedicated Fire Alarm network, it is highly recommended that regularly updated anti-virus software protection be installed on each connected computer. The TrueSite Graphic Annunciator has been verified as compatible with Symantec EndPoint Protection 12.1.3 and McAfee Enterprise 8.8.

## Additional Reference

**Table 15: Reference Instructions**

Description	Document
Installation and Checkout Instructions	579-834AC
Operation and Application instructions	579-835AC

## Hardware Reference with 21.5" Desktop Monitor and 19" Rack Mount Monitor

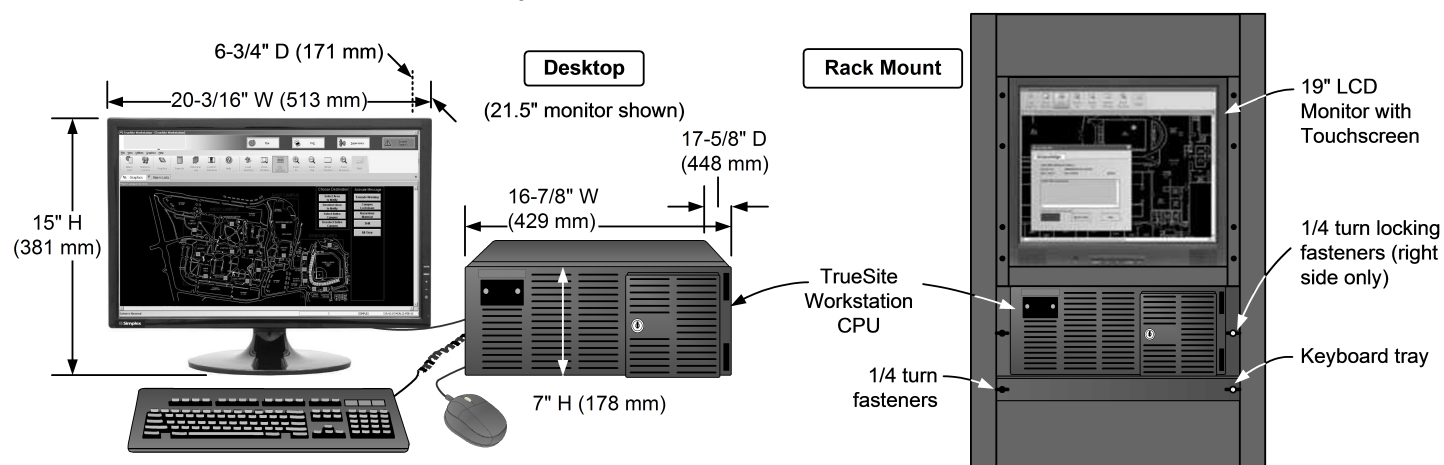


Figure 9: Hardware example