

Features

Fire alarm speakers with models for ceiling or wall mount:

- Four inch cone (102 mm) provides high quality tone and voice reproduction
- Multi-tapped design provides output power of ¼, ½, 1, or 2 W with either 25 or 70.7 VRMS input
- In/out wiring terminals for 18 AWG to 12 AWG
- Mounts to 4" square outlet box, 1 ½" deep with 1 ½" deep box extension
- Capacitor input for connection to supervised notification appliance circuits
- Rugged, high impact, flame retardant thermoplastic housings
- UL listed to Standard 1480
- ULC listed to Standard S541, refer to page 4 for required minimum wattage tap per housing type
- Compliant with NFPA 72, 520 Hz Low Frequency Signal Requirements for Sleeping Areas

Rectangular housing models feature:

- Appearance that complements TrueAlert strobes and speaker/strobes
- Red or white housings with "FIRE" lettering for surface or semi-flush wall mount
- Optional matching adapter skirts for covering surface mounted electrical boxes
- Optional red wire guard

Round housing models feature:

- Off-white color (no lettering) for flush mount on ceiling or wall
- Compatible with optional tile bridge 2905-9946

Introduction

AutocallA4902 Series speakers provide high quality sound for emergency fire alarm use as well as for background music. The moisture-repellent speaker is designed for smooth frequency response with minimal distortion.

The multi-tapped speaker transformer accommodates either 25 or 70.7 VRMS and provides an output of from ¼ to 2 W to provide flexibility for satisfying the requirements of the installed conditions.

Rectangular housing models are for surface or semi-flush wall mount applications. Round housing models are typically for ceiling applications but can be wall mounted if desired. The rectangular housing speakers are designed to compliment the TrueAlert family of strobes and speaker/strobes, providing conventional, non-addressable speaker operation.



Fig 1: Rectangular Wall Mount Speakers are Available as Red with White "Fire" Lettering and White with Red "Fire" Lettering

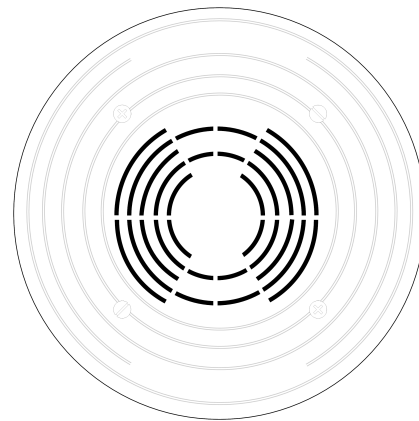


Fig 2: Round Speakers are Available in Off-White (no lettering)

Specifications

Table 1: Dimensions, Rectangular Wall Mount Housings

Specification	Dimensions
Housing Dimensions	5 1/8" H x 5" W x 1 1/2" D (130 mm x 127 mm x 38 mm)
Depth into Box	2 3/4" (70 mm)

Table 2: Dimensions, Round Housings

Specification	Dimensions
Housing Dimensions	7 1/2" Diameter, 1/2" D (191 mm x 13 mm)
Depth into Box	2 3/4" (70 mm)

Table 3: General Specifications

Specification		Rating
Input Voltage		25 or 70.7 VRMS
Power Taps		1/4, 1/2, 1, and 2 W
Input Terminal Ratings		18 to 12 AWG (0.82 mm ² to 3.31 mm ²)
Frequency Response	Fire Alarm	400 to 4000 Hz
	General Signaling	125 to 12 kHz
Sound Output		See Speaker Sound Output Specifications on page 7
Temperature Range		32° to 100° F (0° to 38° C)
Humidity Range		10% to 95% RH from 32° to 122° F (0° to 50° C)

Product Selection

Table 4: Speaker product selection

SKU	Description		Dimensions
A4902-9716	Rectangular housing, wall mount speaker	Red with white "FIRE" lettering	5 1/8" H x 5" W x 1 1/2" D (130 mm x 127 mm x 38 mm)
A4902-9717		White with red "FIRE" lettering	
A4902-9721	Round housing speaker, ceiling or wall mount	Off-white (no lettering)	7 1/2" Diameter x 1 1/2" D (191 mm x 13 mm)

Table 5: Mounting Adapters

SKU	Description				Dimensions
A4905-9941		Red	Surface mount adapter skirt; (not ULC listed)	Use to cover surface mounted 1-1/2" deep box with 1-1/2" deep extension external to wall (see Wall Mount Speakers, Installation Reference on page 4)	5 3⁄8" H x 5 1⁄4" W x 3 3⁄16" D (136 mm x 133 mm x 81 mm) Total surface depth with speaker = 4 5⁄8" (117 mm)
A4905-9942		White			
2905-9946	Tile bridge for A4902-9721 Speaker				See Wall Mount Speakers, Installation Reference on page 4
A4905-9931	Adapter Plate, red, for mounting to 2975-9145 box (typically for retrofit, may be mounted vertical or horizontal)				8 5⁄16" x 5 3⁄4" x 0.060" Thick (211 mm x 146 mm x 1.5 mm)
2975-9145	Red mounting box, requires Adapter Plate A4905-9931				7 7⁄8" x 5 1⁄8" x 2 3⁄4" D (200 mm x 130 mm x 70 mm)

Table 6: Covers and Guard

SKU	Description	Dimensions
A4905-9988	Red speaker cover with white "FIRE" lettering	Interchangeable with TrueAlert horns 5 1/8" H x 5" W x 1 1/2" D (130 mm x 127 mm x 38 mm)
A4905-9989	White speaker cover with red "FIRE" lettering	
A49WG-SOWR	Red wire guard with mounting plate; compatible with semi-flush or surface mounted boxes; for use with 4" square electrical box mounting hole patterns only (UL, ULC, CSFM listed by Space Age Electronics Inc.)	6 1/16" H x 6 1/16" W x 3 1/8" D (154 mm x 154 mm x 79 mm)

Wall Mount Speakers, Installation Reference

Mounting requires a 4" (102 mm) square box, 1-1/2" (38 mm) deep, with a 4" box extension, 1-1/2" deep, by others

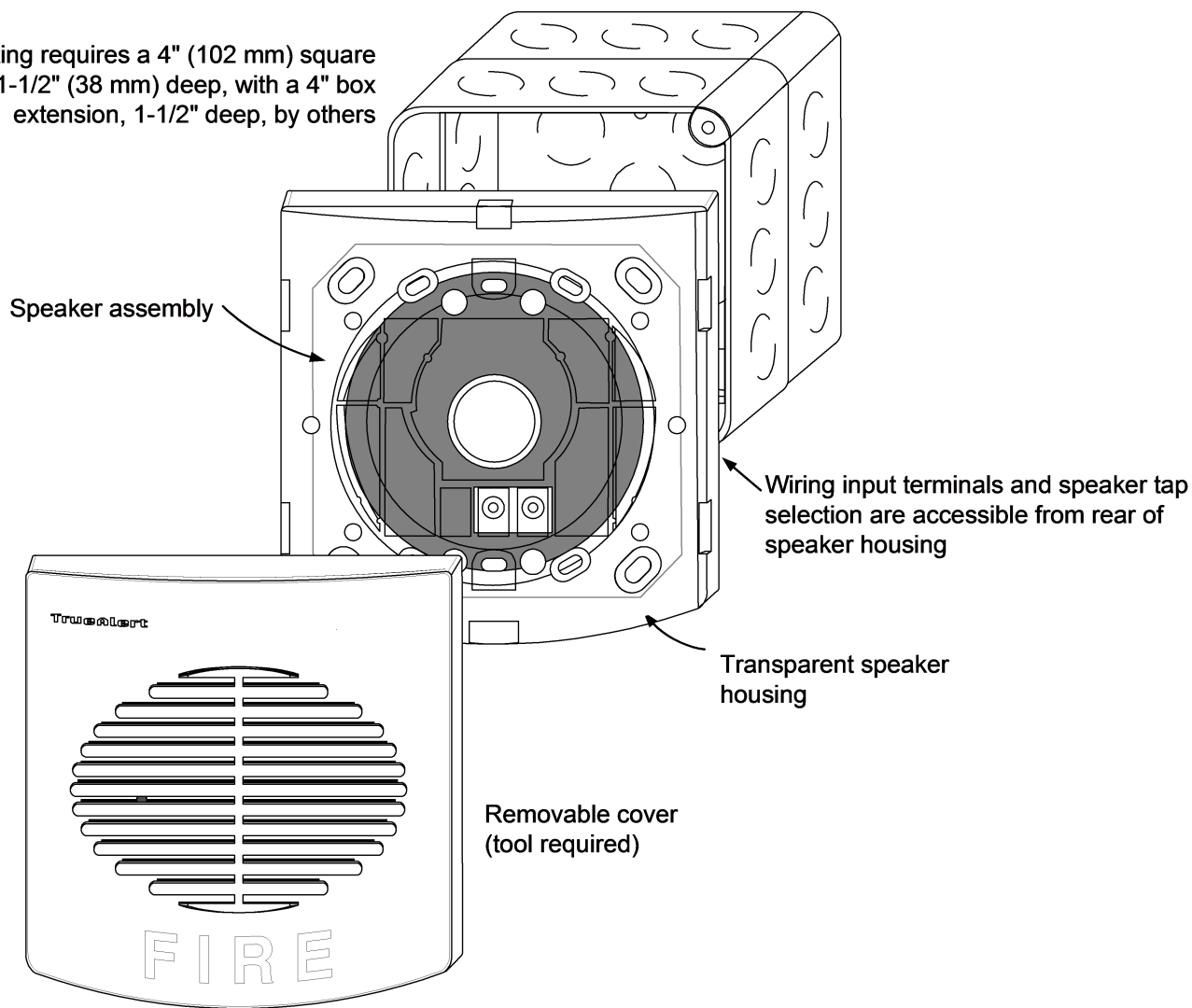


Fig 3: Wall Mount Speakers, Installation Reference

Round Speaker Installation Reference (typically ceiling mount, can be wall mounted)

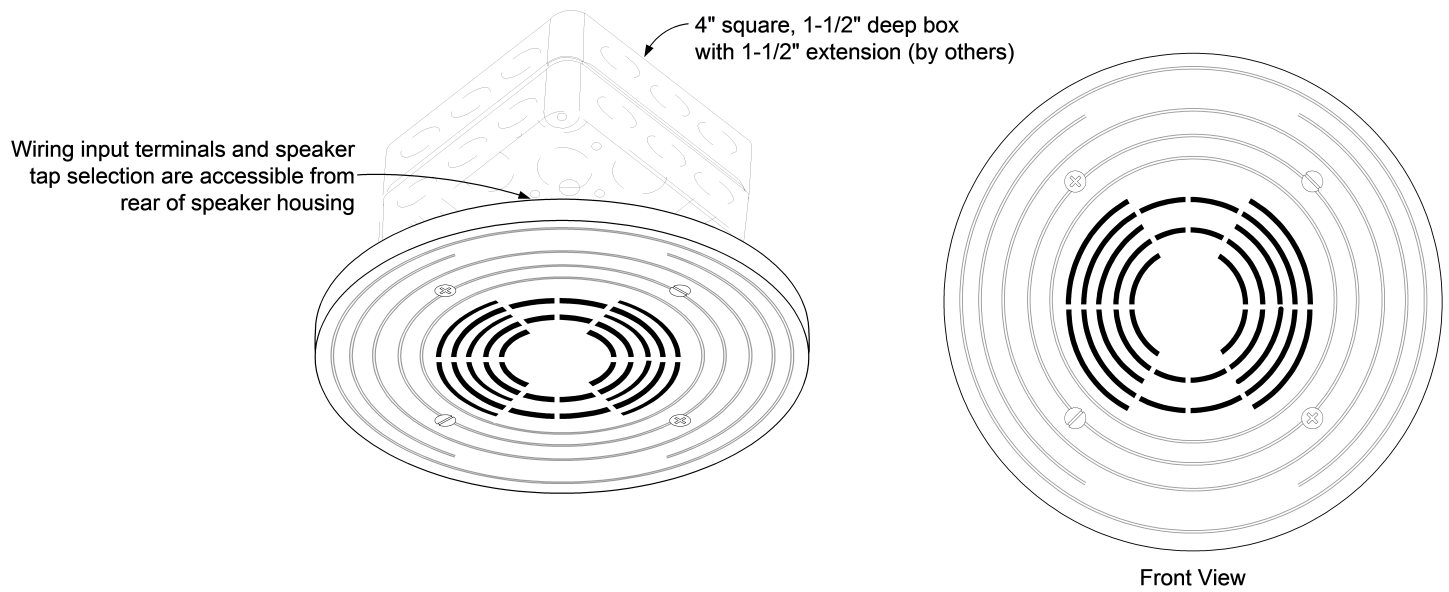
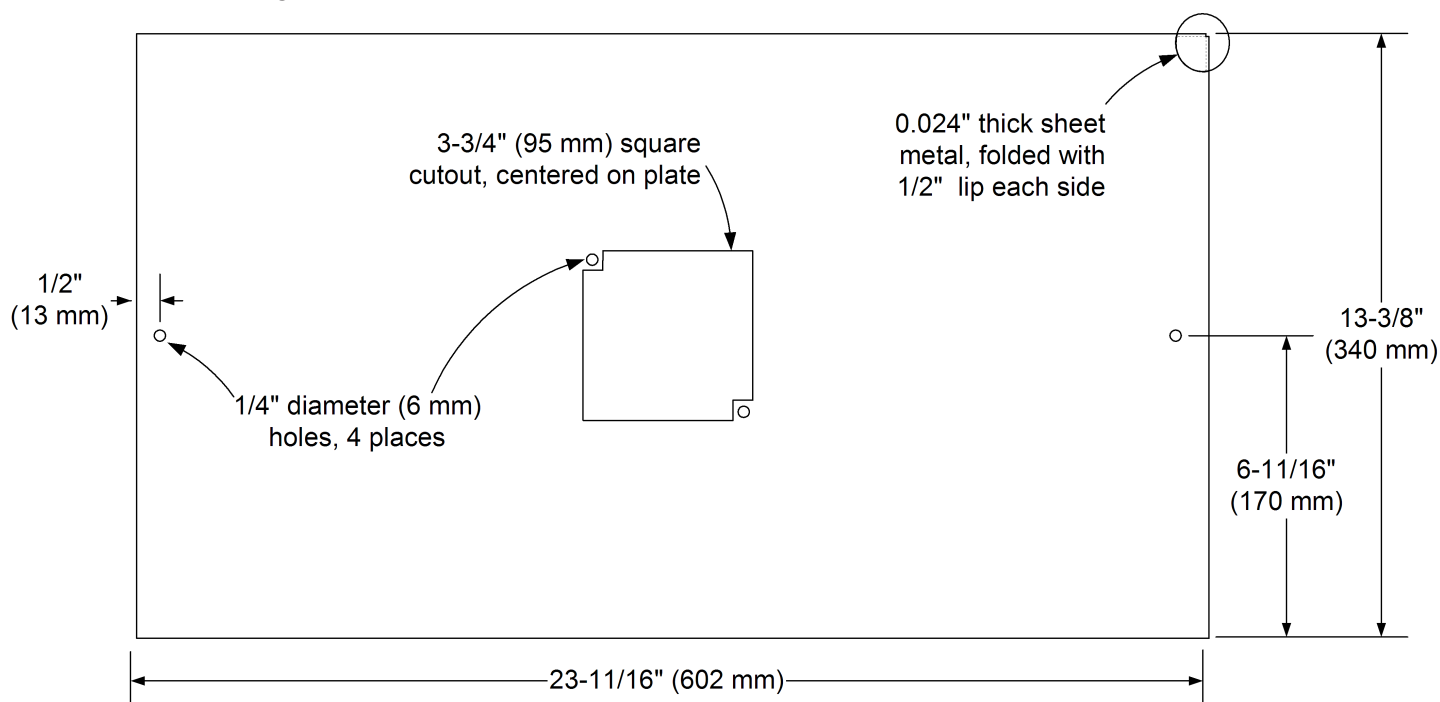


Fig 4: Round Speaker Installation Reference

2905-9946 Tile Bridge Dimensions



Surface Mounted Speaker Reference (Adapter Skirts are Not ULC listed)

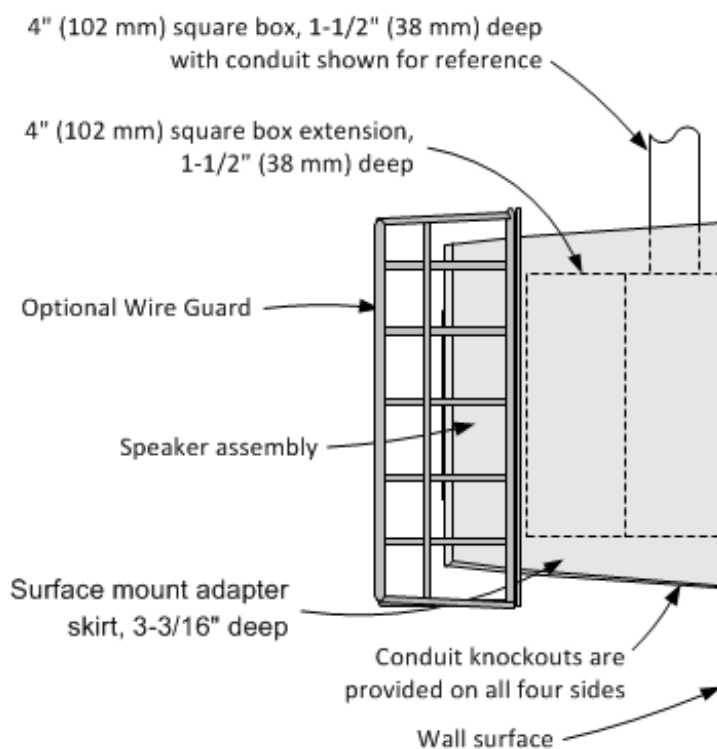


Fig 5: Surface Mounted Speaker Reference

Note: Figure 5 shows surface mount adapter skirt available in red (A4905-9941), and white (A4905-9942). Optional A49WG-SOWR Wire Guard also shown.

Speaker Sound Output Specifications

Table 7: Sound Output Ratings @ 10 ft (~3 m) per UL 1480 Reverberant Chamber Testing

SKU	Type	Input Voltage	Selected Tap			
			¼ W	½ W	1 W	2 W
A4902-9716	Rectangular Housing	25 VRMS	80 dBA	83 dBA	85 dBA	88 dBA
A4902-9717		70.7 VRMS	79 dBA	82 dBA	85 dBA	88 dBA
A4902-9721	Round Housing	25 or 70.7 VRMS	79 dBA	82 dBA	85 dBA	88 dBA

Table 8: Speaker Polar Dispersion Reference (per ULC S541 Anechoic Chamber Testing)

Attenuation	Angle
-3 dB	30° off-axis
-6 dB	55° off-axis

A4905-9931 Adapter Plate Installation Reference

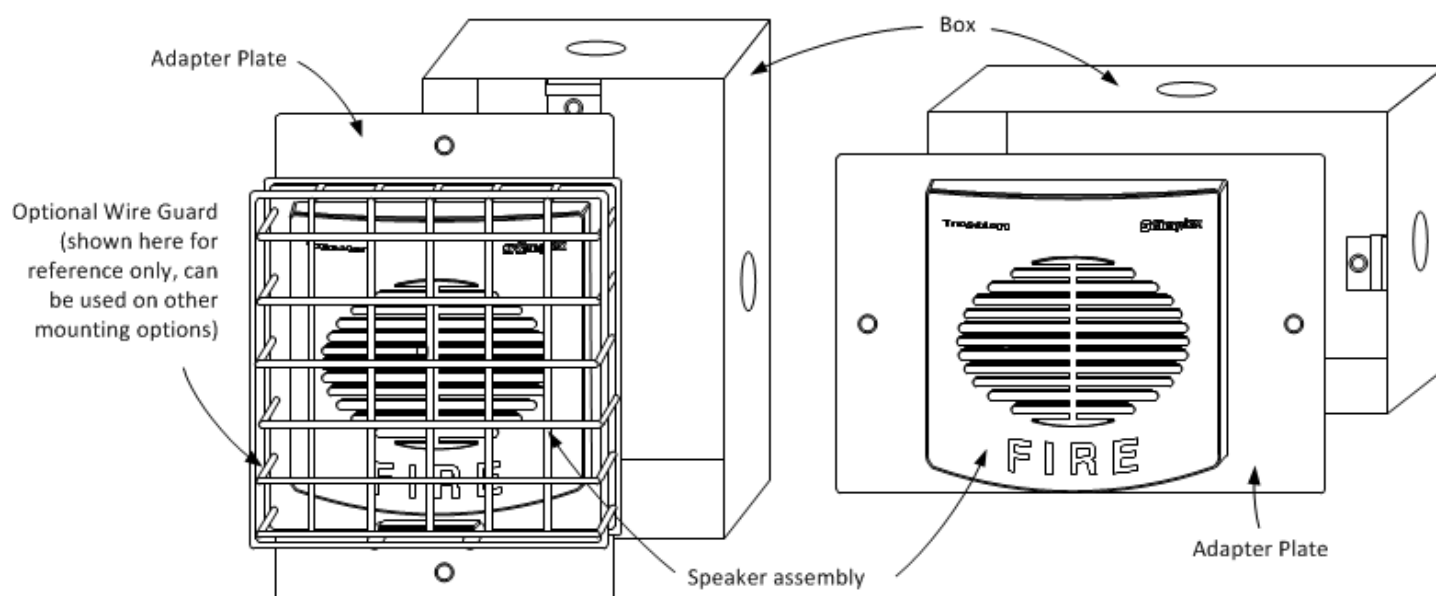


Fig 6: A4905-9931 Adapter Plate Installation Reference

Note: Figure 6 shows:

- A4905-9931 adapter plate
- 2975-9145 back box
- A49WG-SOWR Optional Wire Guard

