

Features

End-of-Line Voltage Monitor Relay provides isolated monitoring of operating voltage:

- For use with 4-wire detectors and similar fire alarm system products
- Model A2098-9735 operates at 24 VDC
- Relay contact provides continuity to end-of-line supervision while energized, loss of power opens supervisory path causing a trouble condition at the monitoring panel
- UL listed to Standard 864

Stainless steel cover plate allows convenient mounting for easy location:

- Mounts in single gang box, 2" (51 mm) deep
- Easy to locate for convenient access

Description

Autocall end-of-line relays provide zone voltage monitoring mounted on a single gang plate for easy access. Upon loss of voltage, the relay contact opens, breaking continuity to the end-of-line zone wiring supervision resistor.

Refer to data sheet **AC4081-0003** for A4081 Series End-of-line Resistor Harnesses.

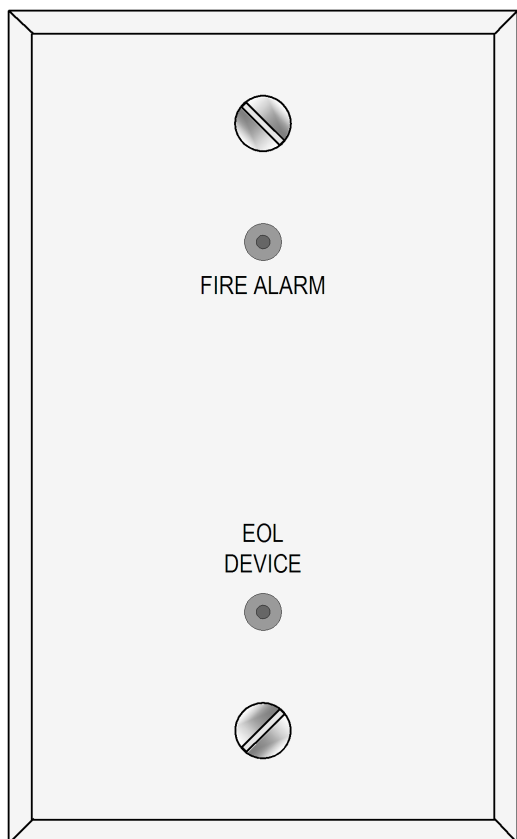


Figure 1: End-of-Line Relay Cover Plate

Specifications

Table 1: Common Specifications

Specification	Details
Contact Rating	3 A resistive @ 24 VDC/120VAC
Electrical Box Requirements	Single Gang, 2" (51 mm) minimum depth
Wiring	Color coded wire leads, 18 AWG (0.82 mm ²)

Table 2: A2098-9735, 24 VDC Nominal Operation

Specification	Details
Input Voltage	20 to 31 VDC
Dropout Voltage	Typical = 5 VDC, must dropout at 3 VDC
Input Current	22 mA maximum @ 31 VDC

Wiring Reference

Typical 4-Wire Zone, 24 VDC Devices (refer to specific devices for exact wiring)

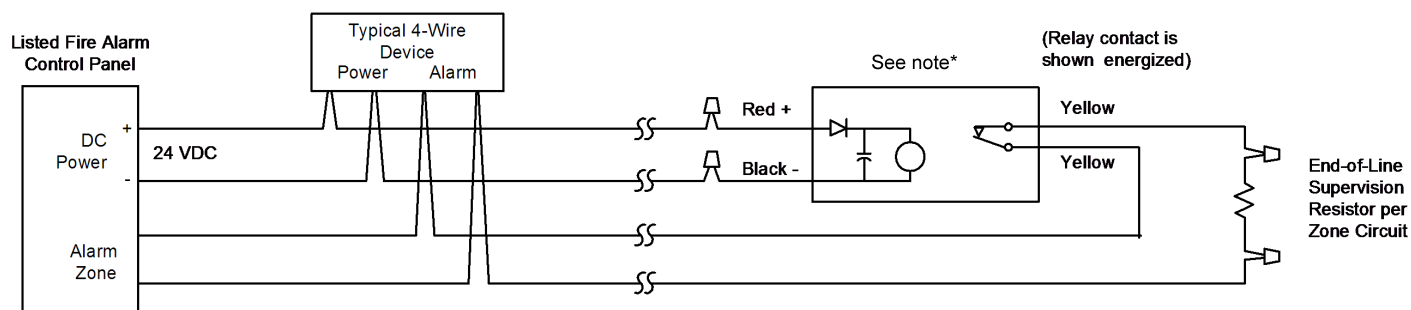


Figure 2: Wiring Reference

*Model shown is A2098-9735.