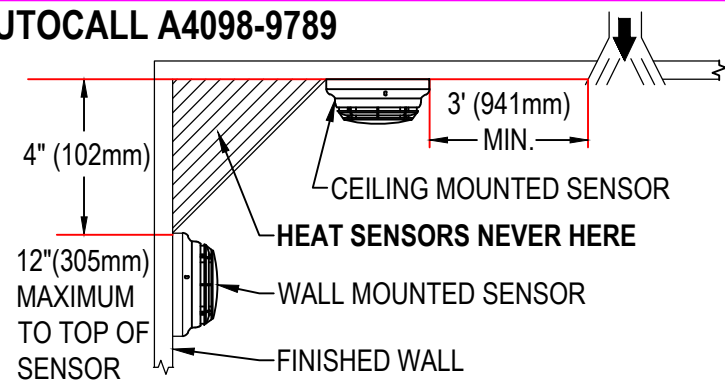
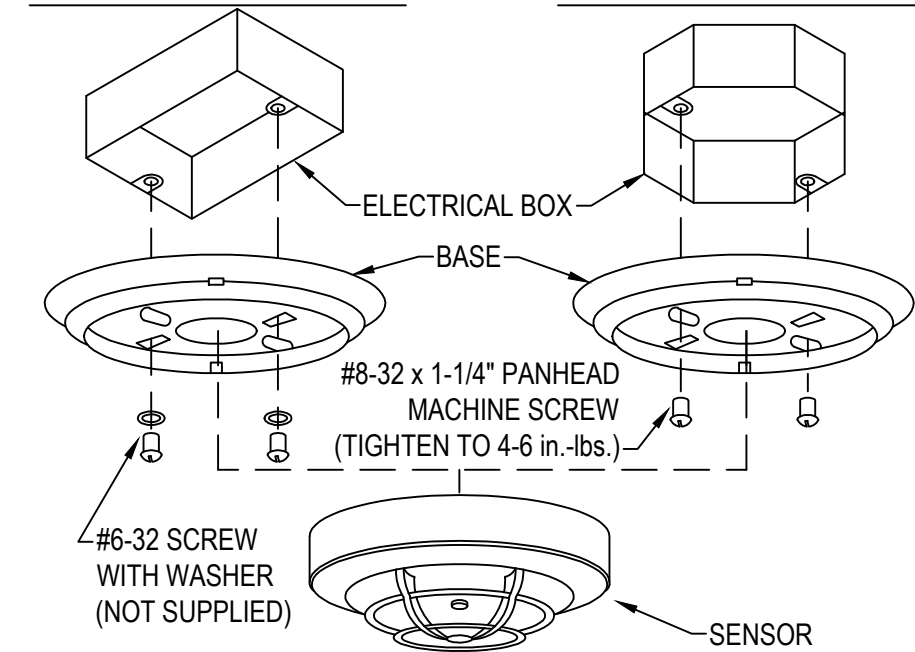


# SENSOR BASE WITH REMOTE LED CONNECTION

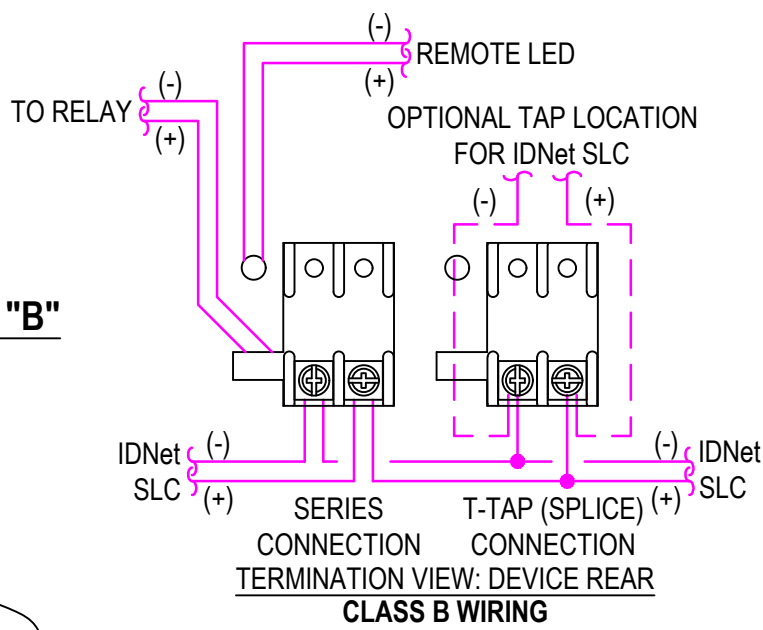
AUTOCALL A4098-9789



## MOUNTING OPTION "A"



## MOUNTING OPTION "B"



## WIRING NOTES

1. MAINTAIN CORRECT POLARITY ON TERMINAL CONNECTIONS.
2. ALWAYS CUT CONDUCTORS AND SECURE UNDER TERMINALS. NEVER LOOP WIRES UNDER TERMINALS.
3. ANY WIRE SPLICES TO BE MADE BY LISTED AND AHJ APPROVED METHODS.
4. 100 FT. MAXIMUM WIRE DISTANCE FROM THE A4098-9780 BASE TO THE RELAY.

## MOUNTING OPTIONS

OPTION <sup>1</sup>	DESCRIPTION	NOTE
A	SINGLE GANG BOX, 2-1/8" (54mm) DEEP - FLUSH MOUNT	BY OTHERS
B	4" (102mm) OCTAGONAL BOX, 1-1/2" (38mm) DEEP, MINIMUM - FLUSH MOUNT	BY OTHERS
C	4" (102mm) SQUARE BOX, 1-1/2" DEEP (MIN) W/ AUTOCALL A4098-9832 ADAPTER KIT	BOX BY OTHERS, A4098-9832 ORDERED SEPARATELY
D	4" (102mm) SQUARE BOX, 1-1/2" DEEP (MIN) W/ SINGLE GANG COVER PLATE 3/4" (19mm) EXTENSION	BY OTHERS

1. FOR ADDITIONAL MOUNTING OPTIONS, DOWNLOAD DATA SHEET A4098-0019 FROM [HTTP://www.autocall.com](http://www.autocall.com)



Owner

Project Name

No.	Description	Date
01	For Review	07/14/2021

Autocall_4098 Addressable Bases Detector A4098-9789			
Project number		01	
Date	07/12/2021		
Drawn by	CV		
Checked by	MA	Scale	NTS