

# ABORT SWITCH

AUTOCALL A2080-9056 & A2080-9067



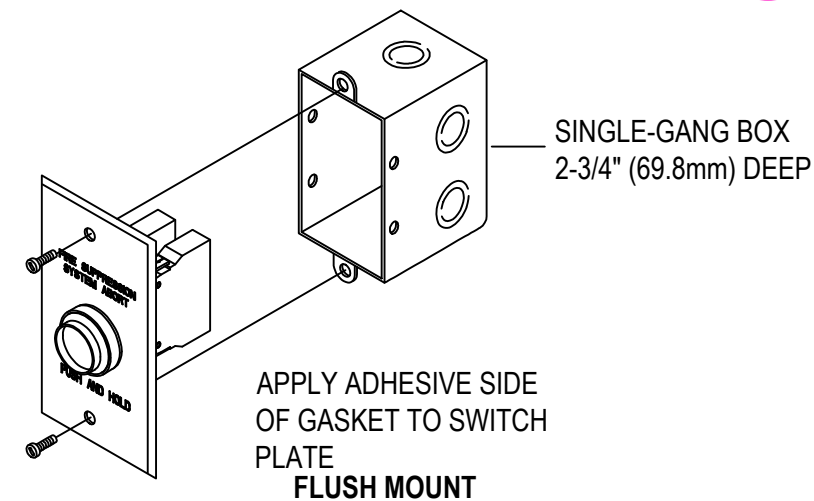
## PRODUCT INFORMATION

### FEATURES:

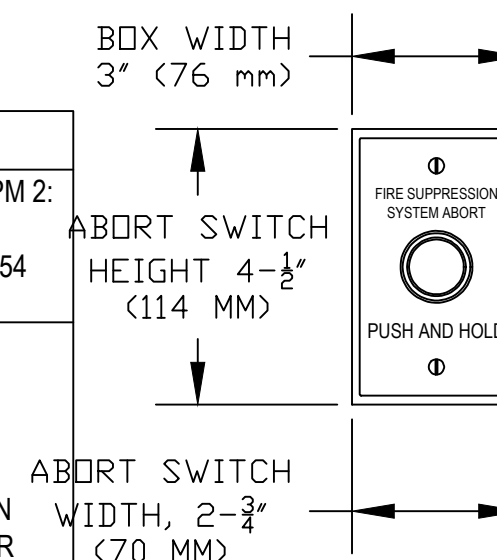
- UL LISTED STANDARD 864
- PUSH BUTTON MOMENTARY SWITCH IS MOUNTED ON A STAINLESS STEEL SINGLE-GANG PLATE
- A PROTRUDING COLLAR PROTECTS THE SWITCH FROM ACCIDENTAL CONTACT (COLLAR IS REMOVABLE IF REQUIRED)

### SPECIFICATIONS:

- WIRE CONNECTIONS: SCREW TERMINALS FOR IN/OUT WIRING FOR WIRE FROM #18 TO #14 AWG
- TEMPERATURE RANGE: 32°F TO 1A20°F
- HUMIDITY: UP TO 93% RH @ 90°F (32°C)



APPLICATION	SPM CIRCUIT FUNCTION
SINGLE HAZARD, CLASS A/B	SPM 1: CONNECT ONLY A2080-9056 OR -9057 ABORT SWITCHES. SPM 2: CONNECT ONLY MANUAL RELEASE SWITCHES. REFER TO "WIRING DEDICATED CLASS A/B SPM CIRCUITS" IN 579-354 FOR SPECIFIC WIRING DIAGRAMS.
SINGLE HAZARD, CLASS A/B  DUAL HAZARD, CLASS A/B	ABORT SWITCHES AND MANUAL RELEASE STATIONS CAN SHARE SPM 1 AND SPM 2. AN ACTIVATED ABORT SWITCHES CREATES A CURRENT LIMITED STATE ON THE CIRCUIT, WHEREAS A MANUAL RELEASE STATION CREATES A SHORT ON THE CIRCUIT. CIRCUIT WIRING DEPENDS ON WHETHER THE ABORT SWITCH CONTAINS AN INTERNAL 1.2K CURRENT LIMITING RESISTOR, AS FOLLOWS: REFER TO "WIRING SHARED ABORT/MANUAL RELEASE WITH EXTERNAL RESISTOR" IN 579.354 FOR INFORMATION ON WIRING A2080-9056 AND -9057 ABORT SWITCHES. REFER TO "WIRING SHARED ABORT/MANUAL RELEASE WITH INTERNAL RESISTOR" IN 579.354 FOR INFORMATION ON WIRING A2080-9067 AND -9068 ABORT SWITCHES.
SINGLE HAZARD OR DUAL HAZARD, STYLE C	SPM 1: CONNECT ONLY A2080-9067 OR -9068 ABORT SWITCHES SPM 2: CONNECT ONLY MANUAL RELEASE SWITCHES. REFER TO "WIRING STYLE C CIRCUIT" IN 579.354 FOR SPECIFIC WIRING DIAGRAMS.



1. FOR ADDITIONAL MOUNTING OPTIONS, DOWNLOAD DATA SHEET A2080-0010 FROM [HTTP://WWW.AUTOCALL.COM](http://www.autocall.com)



Owner

Project Name

No.	Description	Date
01	For Review	07/14/2021

Autocall\_Abort Switch\_2080-9056 & 2080-9067

Project number

Date 07/12/2021

Drawn by CV

Checked by MA

01

Scale NTS